



**VELUX®**

Project Daylight





# Where there's light there's life

Natural light is fundamental to the quality of our lives and living environments.

More than any other element, its many moods and variations can help you make a house a real home.

Not only does it create an atmosphere, it can actually alter the way we feel about our living spaces.

## **Project Daylight**

VELUX believe everyone should be able to enjoy the benefits of natural light and fresh air. We've given this belief a name. Project Daylight. Its aims are simple.

To give people the tools they need to turn their rooms into light-flooded areas for inspirational living. And ultimately, bring light to life.





# Bringing light to life™

|                              |         |
|------------------------------|---------|
| The possibilities of light   | 4 - 7   |
| Making light work for you    | 8 - 17  |
| Light and everyday life      | 18 - 19 |
| Light and creativity         | 20 - 25 |
| Light and technology         | 26 - 31 |
| Managing light               | 32 - 33 |
| Range and quality            | 34 - 35 |
| Guaranteed peace of mind     | 36 - 37 |
| The Project Daylight promise | 38      |





Window type:

**3 x GGU INTEGRA® M08**  
**with --73 Pane**  
**2 x White EBY support rafters**

For more information  
and prices on this product  
see the 'Managing your  
project' guide or visit  
[www.velux.co.uk/products](http://www.velux.co.uk/products)  
[www.velux.ie/products](http://www.velux.ie/products)

# The possibilities of light

Great things can happen when we incorporate light into our room designs.

Think of it in the same way as paint and fabric, for example. You can splash it across a wall, over furniture or cover an entire room in it.

Think of the effect it has on a well-chosen coat of paint or an eye-catching fabric and you begin to see its true potential.

Throughout this brochure we'll demonstrate the important role light plays in our lives. We'll give you hints and tips on how to make it work for you. To open up space. And to add real value to your property.

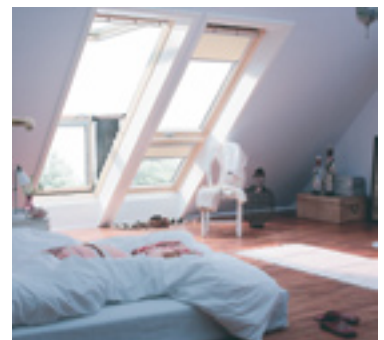
We'll also offer the kind of inspiration that will help you enhance your home and create a spectacular living environment.



You can create extra square metres in your home simply by opening it up to natural light.



With a good supply of natural light a room can feel bigger, even when dark colours are used.



This CABRIO® Balcony System helps to extend the living area and fills the room with fresh air.

Studies carried out in hospitals have proven that natural light actually accelerates the healing process.



Achieving harmony and balance makes the home functional, flexible and relaxing.

Window type:  
**8 x GGL M04**  
 with --60 Pane  
**8 x Siesta blinds**

For more information and prices on this product see the 'Managing your project' guide or visit  
[www.velux.co.uk/products](http://www.velux.co.uk/products)  
[www.velux.ie/products](http://www.velux.ie/products)

## Bring people together

Like moths to a flame we naturally move towards the light.

Think about your home as it stands at the minute. Ask yourself which rooms you currently use the most. Chances are it'll be the rooms that let in the most light.

Is it the connection to the outside world or the increased feeling of space that appeals to us? Whatever the reason, the benefits are clear to see.

At VELUX, we understand that lighting can have a dramatic affect on the mood of a room and how you feel towards it. That's why we've developed a variety of products to help you use this natural resource in a number of different ways.

You can add an extension and turn it into a sunroom or convert the loft into a bright and airy bedroom, study or even a master suite. A kitchen with a breakfast table basking in natural light from above, for example, can become a gathering place for the whole family. On the other hand, if the kitchen is poorly lit it can have the opposite effect.

You may also notice that you use different rooms at different times of the day. This depends on which way your house faces and the type of light it receives.

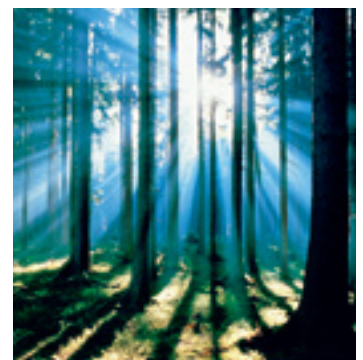
All of these things are worth considering before starting out on your own project. However, once you open yourself up to the possibilities of light you can begin to make it work for you.

## More than light

We see the true potential of light and are constantly looking for new ways in which to use it. However, it's not just this natural phenomenon that occupies us.

Throughout the years, VELUX have been highly committed to reducing the environmental impact of the manufacture, use and disposal of our products.

That's why we use wood from sustainable forests and produce an innovative range of glazing with excellent energy saving properties. We also strongly believe that the more natural light we have in our homes, the better for our health and the environment.



27% of carbon emissions come from your home. But by supplying it with natural light instead of artificial light you can help change this statistic.







Midday light is warm and powerful.



Generally speaking, light from the north is cool and steady and casts few shadows.



Invigorating morning light wakes you from your slumber and prepares you for the day ahead.



The light at dusk has a calming effect, signalling a change in the day.



The light from the west can be warm and rich in the late afternoon.



The time of year will determine both the quality and quantity of light available.



# Making light work for you

The key to making the most of this essential resource is to understand exactly what we want from our homes.

You may be looking to add a bit of flair to your surroundings. Or, on a more practical level, you might simply wish to make the most of your available living space. Especially if your family is outgrowing your home.

One thing's for sure, there's a lot you can achieve. From creating the dream bathroom to converting the loft into a master bedroom and en suite. Whatever you want from your property, there are a number of ways in which you can make light work for you, to open up space and add value.

In this section we'll show you how.



A great example of how a little design consideration can help you use light to transform a room.



A bright and airy office space, thanks to the inclusion of VELUX Roof Windows.

Just as natural light is good for you, a lack of it can have the opposite effect. Seasonal Affective Disorder (SAD) is a clinically diagnosed condition in which the lack of sunlight in winter makes people feel ill or depressed.



## Turn up the light

Adding natural light can have a positive impact on the apparent size of your home. As you can see from this playroom, even smaller rooms can appear larger if they have an ample supply of natural light. The extended views also help to create the impression of space.



## Set the mood

Different rooms require a different approach to lighting. It all depends upon the mood you're trying to create. This singular roof window has been carefully positioned to bring a feeling of calm and relaxation to the room. It doesn't just compliment the design. It actually enhances it.

## Express yourself

Letting light into your home is just the beginning. How you do this is the exciting part. This stunning master bedroom uses a mixture of sloping and vertical elements to give uninterrupted views of the surrounding area. The once dark roof space is now flooded with light.





## Find a balance

A perfect example of how carefully positioned windows can help bring harmony to a home. Positioning the windows side by side opens up the space. The room is now functional, flexible and relaxing.



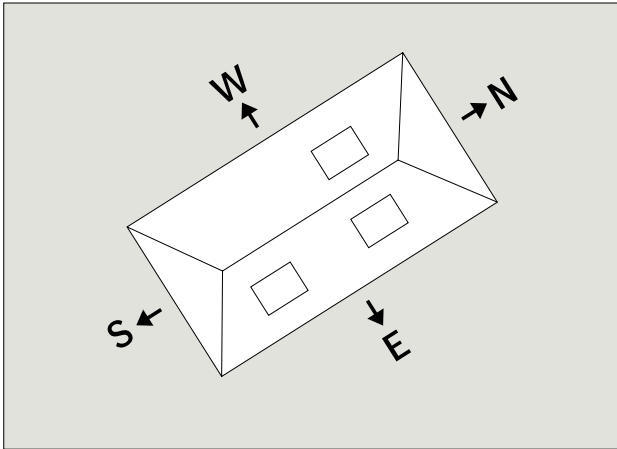
## Open up space

Loft conversions, such as this one, can give you extra square metres and add real value to your home. Breathing light and life into your loft has never been easier. Even a simple VELUX solution can have a dramatic effect. It will transform your loft into a versatile living space filled with daylight and fresh air.



## Invite the outside in

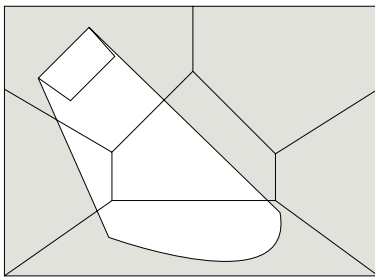
By adding more windows to an extension you can create an inviting sunroom. As you can see, this has now become the perfect place to spend a relaxing afternoon.



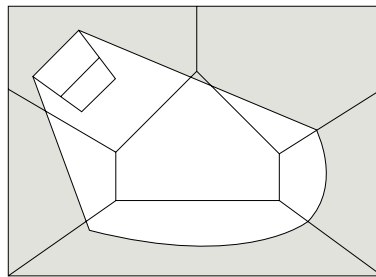
## Find the right position

It's important to consider the position of your home and rooms when thinking about installing your VELUX Roof Windows.

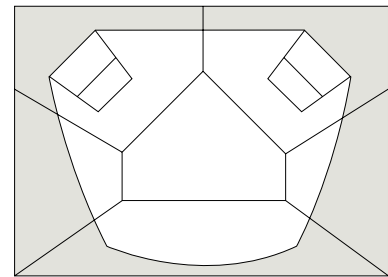
Once you've found out where the sun rises and sets you can maximise the potential of our products by positioning them in such a way that they help you make the most of the available light.



1 window



2 windows



4 windows

## More or less light

You can regulate the amount of light a room receives by choosing where you position your windows and how many you decide to use.

If you put a singular roof window on the south side of your home, as demonstrated above, it will capture most of its light either in the morning or the afternoon. Add two windows together and you immediately catch more. To ensure a room has an ample supply of light, we recommend a minimum 15% of glazed area to floor space.

Remember, as the sun moves across the sky the light will change. However, if you put a window on either side of your room, you can catch the light as it moves throughout the day and increase the distribution.

We've all heard about the benefits of milk. But did you know that sunlight also has a similar positive effect? Sunlight causes the body to produce Vitamin D, which helps to build strong teeth and bones, whilst boosting the immune system.



## Choose your light

We can help you fill virtually any room with natural light. This is because VELUX Roof Windows can be installed in any kind of roofing material and roof pitch. Here are a few examples.

Constructing a light shaft with a VELUX Roof Window installed at the end of it is an obvious way of letting the light in. However, it's worth considering how you want that light to fall first before constructing your shaft.

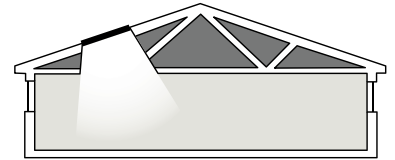
For ceilings that slope to the roofline, there are limitless combinations for creating your own sunroom. You simply choose the type of windows you want and decide where you want to put them.

There are a number of daylight solutions available for loft conversions. Simply think about your roof pitch and roofing material. Then consider the size and shape of your loft space. This will help you decide how many windows you need to install and where to put them.

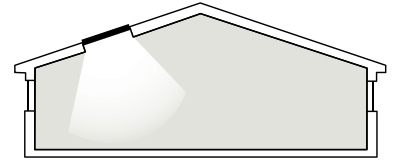
Perfect for flat roof extensions is our Flat Roof System. It lights up the area below and, thanks to the built-in ventilation system that all VELUX Roof Windows have, delivers an ample supply of fresh air. There's also an electrical version so you can control the ventilation at the touch of a button.

If you'd like natural light to reach internal rooms such as hallways and cupboards the VELUX Sun Tunnel could be just what you're looking for. See page 15 for more details.

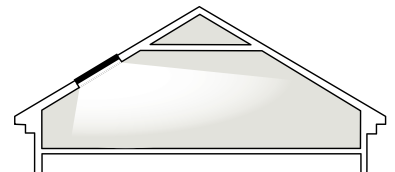
You can find more practical advice on selecting the right window for the right type of room at [www.velux.co.uk/inspiration](http://www.velux.co.uk/inspiration) or [www.velux.ie/inspiration](http://www.velux.ie/inspiration)



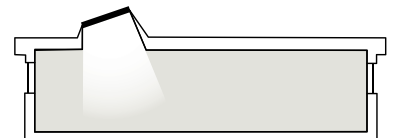
Light shaft



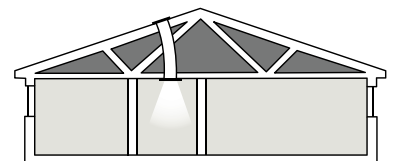
Open ceiling



Loft scenario



Flat roof



Sun Tunnel



The versatility of VELUX windows means you can combine them together on top of each other.



They also work well when placed side-by-side.



The more you add, the more light and fresh air you can fill a room with.

## Online project manager

To help make light work for you, take a look at our online project manager tool at [www.velux.co.uk/projectdaylight](http://www.velux.co.uk/projectdaylight) or [www.velux.ie/projectdaylight](http://www.velux.ie/projectdaylight)



# See the potential

Which areas of your home could benefit from the addition of natural light and increased ventilation?

Here are just a few ways in which you can add space and value to your property.

Loft conversions are arguably the best way to add value to your home. According to the FMB (Federation of Master Builders) a loft conversion can add up to 15%.

This Polyurethane (GGV) roof window floods the bathroom with light and is specifically made for humid rooms. It's also easy to wipe clean.

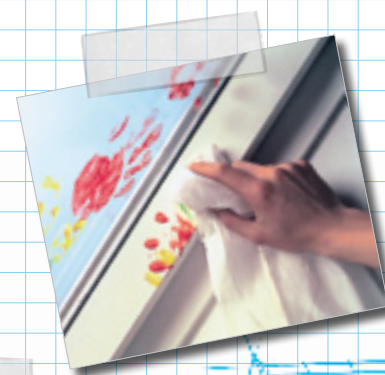


Before



After

[www.velux.co.uk/projectdaylight](http://www.velux.co.uk/projectdaylight)  
[www.velux.ie/projectdaylight](http://www.velux.ie/projectdaylight)



Perfect for windowless corridors and internal rooms, the Sun Tunnel is easily installed between your roof and ceiling and floods any area with natural light. Its flat glass gives it a roof light appearance meaning they also look great from the outside. Go to [www.velux.co.uk/suntunnel](http://www.velux.co.uk/suntunnel) or [www.velux.ie/suntunnel](http://www.velux.ie/suntunnel)

A loft conversion gives you extra space without reducing the size of your garden. With our Roof Terrace System you can maximise the amount of light you receive and walk outside and enjoy the views. Perhaps it will become your favourite place to have breakfast or a glass of wine in the evening.

It's worth getting some expert help before starting out on a loft conversion. For practical advice visit [www.velux.co.uk/inspiration](http://www.velux.co.uk/inspiration) or [www.velux.ie/inspiration](http://www.velux.ie/inspiration)



Flat roof extensions are a great way to increase the floor space of your home. Light it naturally from above and it becomes instantly inviting.



Even one storey buildings such as this kitchen extension can benefit from increased lighting. The two windows (GGL) used in this room are out of reach to open by hand. The solution? VELUX INTEGRA®. See page 29 or visit [www.velux.co.uk/integra](http://www.velux.co.uk/integra) or [www.velux.ie/integra](http://www.velux.ie/integra) for more information on this innovative electric roof window.





Window type:  
**2 x GGL M04**  
**with --59 Pane**

For more information  
and prices on this product  
see the 'Managing your  
project' guide or visit  
[www.velux.co.uk/products](http://www.velux.co.uk/products)  
[www.velux.ie/products](http://www.velux.ie/products)

## Find your home's true value

Light has the ability, if used correctly, to unveil the true value of our homes. By adding a VELUX Roof Window to a room you'll see a noticeable difference in how often you use it. Think about larger areas of your home and you begin to see the possibilities.

## Don't move out. Move up

As much as 30% of your homes available space is in the loft. So it's no surprise that a loft conversion is one of the best ways to add flexible space to a house. Think about it. The foundations are already in place. So is the roof. Letting the light in will make it a more liveable space.

Depending on the size of your loft, you could add an extra bedroom, children's playroom, or even a master suite. A second bathroom can increase the value of your home by at least 5%.

## Great return on investment

A loft conversion can add between 6 and 15% to the value of your home, per bedroom. It can also save you time and money searching for a new property to accommodate your growing family. And you don't lose any garden space to an extension either.

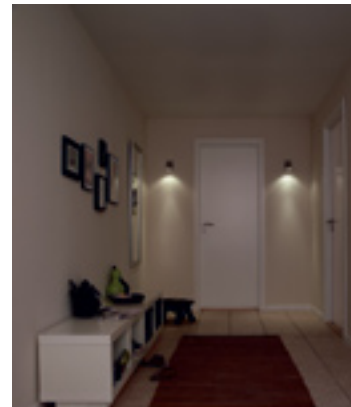
## Guaranteed peace of mind

We want you to feel safe when using any of our products. That's why our windows include a built-in security bolt, toughened glass and are tested under the most extreme weather conditions. But it doesn't stop there.

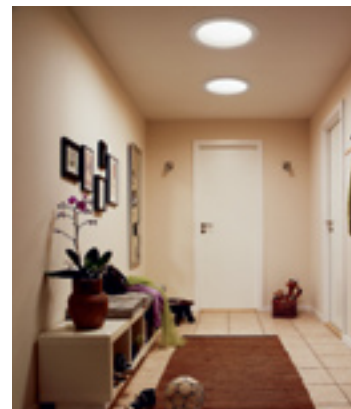
All VELUX windows come with a 10-year guarantee. For extra peace of mind.

## Ideas and inspiration

You'll also find a whole range of case studies online. They're full of inspiration and new ideas, which could help bring your own Project Daylight to life.



Before



After

Natural light from a VELUX Sun Tunnel can help internal rooms and hallways to feel more inviting, which can help make better use of your home's available space. What's more, electricity bills will be reduced, too.

You can notice the benefits of natural light in children. It helps them to concentrate. It also helps to keep them focused and less distracted. Some studies even suggest that natural light in classrooms can improve academic performance.





Window type:

**1 x GGU M08  
with --59 Pane  
and Venetian blind**

For more information  
and prices on this product  
see the 'Managing your  
project' guide or visit  
[www.velux.co.uk/products](http://www.velux.co.uk/products)  
[www.velux.ie/products](http://www.velux.ie/products)

See the possibilities

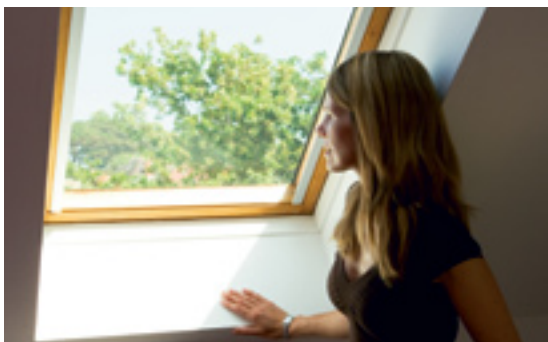
# Light and everyday life

We all take great pride in our homes. We like to make sure they're well presented, functional and comfortable to live in. That's where light can play such an important role.

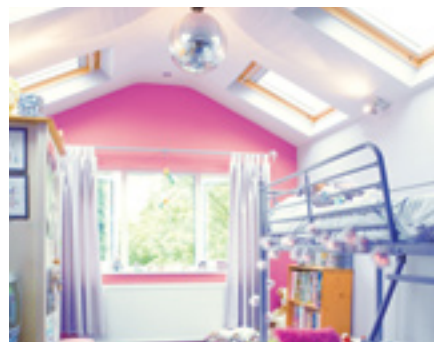
Used properly, it can create a feeling of space. This in turn helps to make a property more desirable and can have a substantial impact on its value.

As you can see from the room opposite, you can transform an otherwise dark area of your home with just a single roof window. Positioning the window directly above the sink is not only very practical it also works as a head-turning design feature. If more than one roof window was added, the same room would appear even bigger and more inviting.

With VELUX Roof Windows you can convert the loft into the perfect adult-only space, kids playroom or light-flooded office. Think for a moment about the other areas of your home and you begin to see the possibilities.



An ample supply of natural light and fresh air, as well as uninterrupted views of the surrounding area.



Flexibility is increasingly what people want from their homes. From the couple setting up their first home together, to the busy family with young kids.



Window type:  
4 x GGL P04  
with --73 Pane  
2 x EBY timber  
support rafters  
4 x Pleated blinds

For more information  
and prices on this product  
see the 'Managing your  
project' guide or visit  
[www.velux.co.uk/products](http://www.velux.co.uk/products)  
[www.velux.ie/products](http://www.velux.ie/products)

## Light and creativity



# Make a statement

The concept of space and natural light having positive psychological, health, and energy-saving benefits is well documented. However, light in all its forms plays a vital role in the design of our homes.

How much light a room receives, and its direction and quality, can affect many aspects of interior design. From the colours we choose for our walls to how we arrange our furniture.

Borrowed or reflected light? Dappled or filtered? There's a lot to consider. Even passing clouds, for instance, can change the whole tone and ambience of a room.

It's what makes it such a wonderfully creative element. Loved by architects and designers alike.



The creative use of shadows can be just as interesting as the light itself.



Scattered across a cushion or seen against a wall, light can impact on all kinds of interesting shapes and patterns.

Natural light literally bounces off lighter coloured surfaces such as walls, floors and ceilings. So if you want to make a room feel bigger, consider pastels and creams.







Window type:

**Combination of VELUX Roof Terrace and vertical and sloping elements.**

VELUX do not provide the decking or railings to accompany the Roof Terrace.

For more information and prices on this product see the 'Managing your project' guide or visit [www.velux.co.uk/products](http://www.velux.co.uk/products) [www.velux.ie/products](http://www.velux.ie/products)

## A real focal point

Take a look at the roof opposite.

It has been opened up to the world with a VELUX Roof Terrace. This stunning design feature also offers access to the outside and gives both the external and internal appearance an individual style all of its own.

Think about the room you're working on. Look at where you'd like to position your window and how many windows you'd like to use. This will all have a considerable impact on the outcome of your design.

And remember, a group of smaller windows can be more pleasing on the eye than one large one.

## Challenge your imagination

For us, the process of creative daydreaming isn't merely wishful thinking.

It can bring us to solutions that are affordable, practical and completely flexible. This is reflected in our range of windows, which can be used in countless combinations to help you create a look that's as individual as you are.

This choice gives you the freedom to bring your ideas to life. Whether you're installing a single roof window to showcase a particular area of a room, or you're planning a grand design of epic proportions.

Think about combining sloping and vertical elements together, as used in the room opposite. You can also push your creative boundaries further with an innovative CABRIO® Balcony System.



Window type:

**CABRIO® Balcony System**

A cost-effective alternative to the Roof Terrace.









## Light and technology



Window type:  
**3 x GGU INTEGRA® M06**  
**with --73 Pane**  
**3 x Pleated blinds.**

For more information  
and prices on this product see  
the 'Managing your project'  
guide or visit  
[www.velux.co.uk/products](http://www.velux.co.uk/products)  
[www.velux.ie/products](http://www.velux.ie/products)

## Pushing the boundaries

Light is such an important resource. Which is why we're constantly striving for new and interesting ways to bring it to life.

The technological advances that we've made over the past 60 years mean that whatever type of roof or ceiling you have, we have a number of ways to help you let the light in.

Our windows are full of patented technology. We also use the latest techniques in everything we do, from the production of our windows to how they are installed in your home. And we're developing new techniques all the time.

The outcome of this innovation and determination is clear. We turn ordinary rooms into extraordinary spaces.



We design our windows to offer excellent functionality as well as beautiful looks.

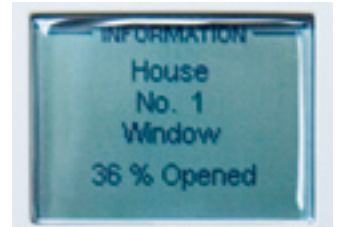


Our patented technology is designed for a perfect fit every time.





With INTEGRA®, you can programme your windows and blinds to open automatically at a time that suits you.



And if it rains the window will shut automatically, so your home stays dry.



You can operate individual blinds or group several together with their status displayed on this stylish remote.

## Complete control with VELUX INTEGRA®

An innovative solution for windows that are out of reach to open by hand. And equally, for people who just love their gadgets.

For more than 30 years, we've developed the world's most advanced electrical roof window products. The development of INTEGRA®, the world's first all-in-one electric roof window, is one of our greatest achievements.

You get programmable ventilation, personal presetting, automated blind control and security you can rely on. You can even set your windows and blinds to wake you up in the morning to fresh air and natural light.

It's easy to install and is available in Centre-Pivot (GGL & GGU) roof windows. If you'd like to know more about INTEGRA® and what it can do for you go to [www.velux.co.uk/integra](http://www.velux.co.uk/integra) or [www.velux.ie/integra](http://www.velux.ie/integra)



All new electrical products from VELUX use state-of-the-art secure radio frequency technology that complies with the new io-homecontrol® standard.



## Window to balcony in seconds

From the outside the CABRIO® Balcony System fits snugly to the roof and looks just like any other VELUX Roof Window. Same applies if you're looking at it from the inside too. However, when the window is opened, it offers something altogether different.

The lower section of the window gently slides forward into position and integral banister railings are automatically raised. The result? You get an instant balcony delivering natural light, fresh air and an extra feeling of space.







Our Siesta blackout blinds help to turn day into night. They come with aluminium backing (as standard) to reduce heat gain and heat loss and are available in a wide range of colours and designs.



The DFD Duo Siesta blind is a combination of our Siesta and Pleated blinds. Its versatility means you get total blackout and heat control as well as a decorative effect.



Pleated blinds also give you privacy and sun screening without blocking out the daylight completely. Create elegant, soft, decorative effects. They're also available in a wide range of colours and patterns.



Classic style combined with practical simplicity, Venetian blinds control both the amount and direction of light.



Roller blinds provide basic privacy and control of sunlight. They come in a wide range of colours and patterns.

# Managing light

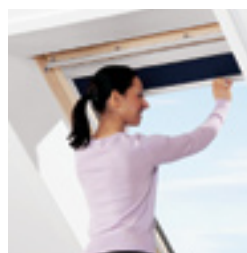
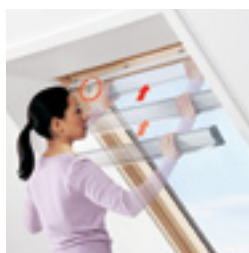
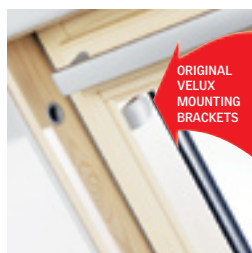
Inviting light into your home is one thing. How you manage that light is another.

Thanks to our extensive range of specially designed blinds, you can control not only the amount of light a room receives, but its direction and quality.

Each style of VELUX blind has a specific purpose, whether you're looking to soften the light or even block it out completely.

As you can see from the room opposite, we also offer remote control blinds. Perfect for windows that are out of reach to open by hand. This sunroom can be as sunny as you want it to be with the simple touch of a button.

What's more, our unique Pick&Click!™ technology means all VELUX blinds are quick and easy to install.



VELUX windows are fitted with pre-installed brackets to ease installation and to help you achieve a perfect fit every time.

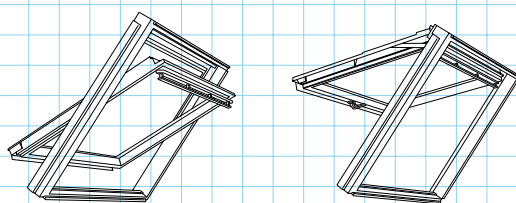
**Pick&Click!™**

You can view our extensive range of blinds and download a brochure at  
[www.velux.co.uk/blindsdirect](http://www.velux.co.uk/blindsdirect)  
[www.velux.ie/blindsdirect](http://www.velux.ie/blindsdirect)  
 or you can order your free brochure by calling  
**0870 381 0740** (UK)  
**1800 409 142** (REPUBLIC OF IRELAND)



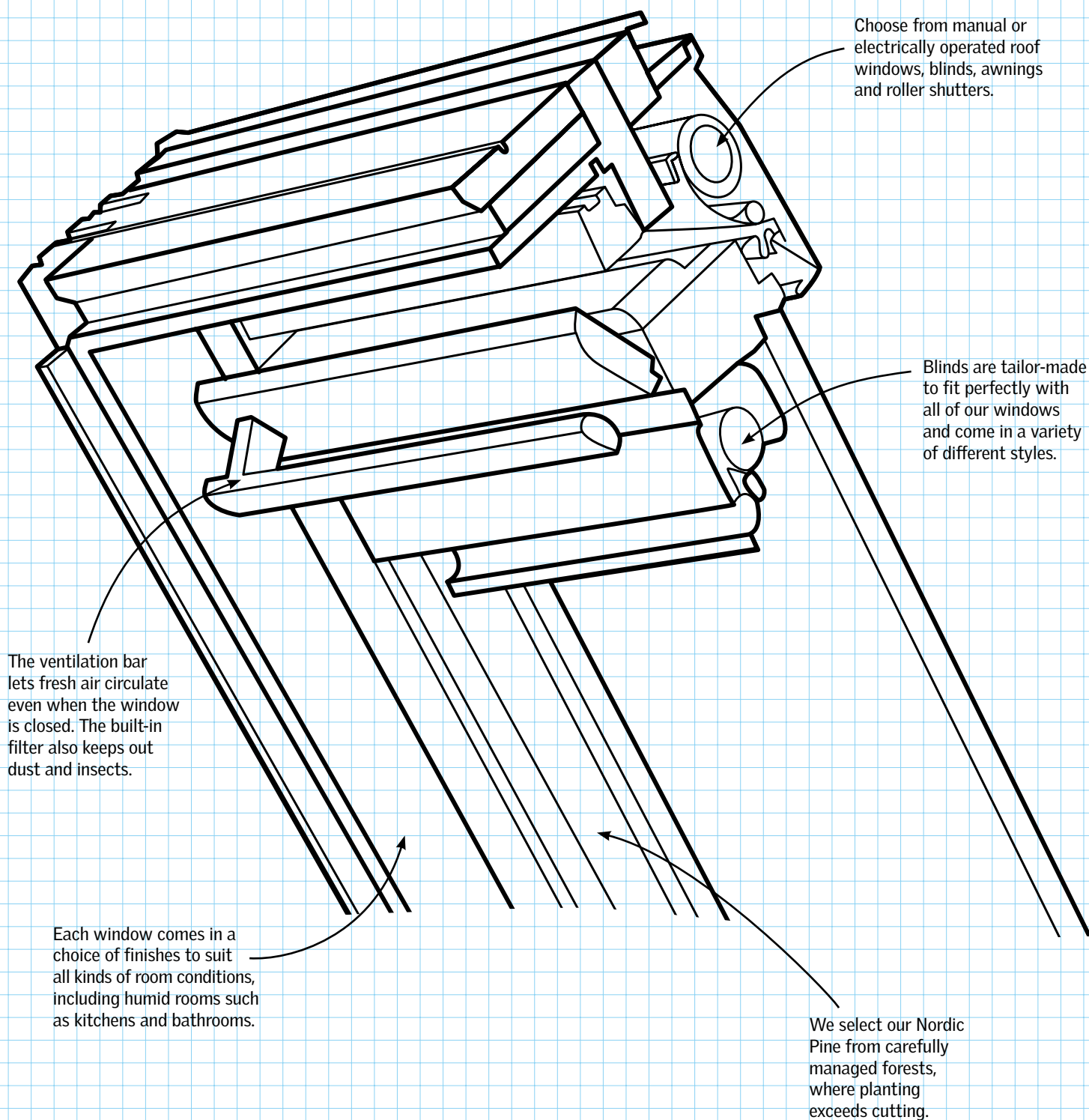


Our windows come in two styles. Traditional Centre-Pivot (GGL and GGU) or, for lower pitched roofs and escape windows, there's a Top-Hung (GHL, GPL and GPU) option.



Centre-Pivot

Top-Hung





Every last detail is carefully considered to ensure you have the best possible product available.

# Range and quality

We've developed our range of windows to be beautiful, practical and affordable. We're also constantly growing our range as we discover new ways to let the light in.

We've created versatile windows with the popular Top-Hung (GHL, GPL and GPU) and Centre-Pivot (GGL and GGU) ranges, through to more specialist products such as Conservation Windows, CABRIO® Balcony Systems and Roof Terrace Systems.

As we develop our range, the quality of our windows remains of the utmost importance. We build it into each stage of the production process on every single one of our windows. It's in the choice of raw materials, the construction methods we use and the strict controls we apply.

It's also why we've been able to maintain our world leader reputation and position for over 60 years.



## Product checklist

**Centre-Pivot** – This popular VELUX Roof Window is available in timber (GGL) or white polyurethane (GGU). The white polyurethane coating offers a modern look and is ideal for humid rooms such as kitchens and bathrooms.

**VELUX INTEGRA®** – Remote control for effortless operation, ideal for windows that are out of reach. Available in timber (GGL INTEGRA®) and white polyurethane (GGU INTEGRA®). Powered by IO-homecontrol® technology.

**Top-Hung** – Helps you open up your living space and take advantage of the view. Also suitable for emergency escape purposes. Comes in either a timber (GPL and GHL) or white polyurethane (GPU) finish.

**VELUX CABRIO®** – Turns from a roof window into a balcony in seconds. Lets you truly appreciate the views and create a striking feature within your project.

**VELUX Roof Terrace** – Allows you the luxury of outdoor living on the roof. Combines sloping and vertical elements to give you access to outside space. So you can extend your living area.

**Conservation Roof Windows** – Specially designed for conservation areas and listed buildings. The window operates in the same way as our Centre-Pivot (GGL) or Top-Hung (GPL).

**Flat Roof System** – Perfect for extensions and available in timber or white polyurethane finish. Also comes with either manual or electrical operation.

**Sun Tunnel** – VELUX Sun Tunnel brings natural light into even the darkest and most isolated spaces through a specially designed tunnel from roof to ceiling. Ideal for corridors and internal bathrooms.

**See Managing your Project for more information on our product range.**





# Guaranteed peace of mind

Look at the nature of glass. Its very invisibility makes it potentially hazardous, especially for children. It's for this very reason VELUX have a range of toughened glazing options. They're also specially designed for heat retention and omission.

Our Top-Hung windows offer emergency escape in the event of a fire.

We also have a range of easy to install security locks and opening restrictors for added protection.

We even test our windows under the most severe conditions, in Northern Europe's largest wind and rain simulator. In specific areas, such as watertightness, VELUX have introduced its own standards that are stricter than international standards.

After all, we encourage our customers to expect the best from their VELUX product, year-in, year-out. In fact, we have so much confidence in our products that we offer a 10-year guarantee with every single window we produce.



The bar on our windows isn't simply for opening and shutting. Pull once and you can increase ventilation without opening the window.



Better pane insulation keeps rooms cooler in summer and warmer in winter.

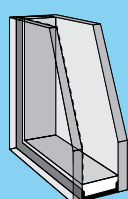


The unique construction of VELUX windows guarantees great performance everytime.

## Glazing options

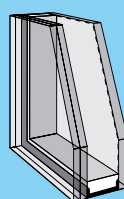
All of our roof windows are supplied with double-glazing as standard. They are filled with argon gas and come with a low-emissive coating for energy saving. It's designed for good all-round performance with clear, undistorted vision and effective sound insulation.

However, there are a number of glazing options that can help you achieve building performance specifications.



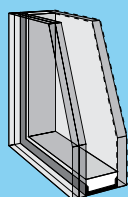
### Standard --59 Pane

This standard glazing comes with a toughened outer pane. In winter, it reflects 60% of the heat normally lost through glass, back into the room. During the summer, it works in reverse by reflecting excessive heat from the sun to help prevent the room from overheating.



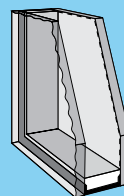
### --73 Pane

An improved version of our Standard --59 Pane, this glazing comes with a toughened outer and laminated inner pane. This makes it ideal for windows that are positioned above head height. As well as giving you extra protection against breakage, it has improved noise reduction, compared with --59 Pane.



### --60 Pane

As with the --73 Pane, it comes with a laminated inner for extra protection. The added benefit of the --60 Pane is that it offers even better energy efficiency and noise reduction. It also comes with our clear and clean outer coating, which helps the window stay cleaner for longer. Ideal for high-level applications, which are hard to access.



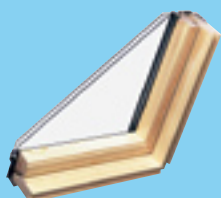
### --34 Obscure Panes

Combines standard glazing with the inner pane obscured. This makes it ideal for bathrooms as it provides privacy without reducing the amount of natural light.

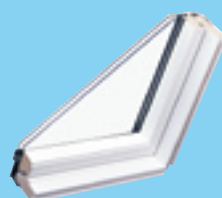
We also have additional glazing options, which are available for special requests.

## Choice of finishes

The frames for our windows are made from Nordic Pine, which is cut from sustainable forests. We choose it not for sentimental reasons, but for practical ones. It has excellent insulation properties and is available in the following finishes.



Clear varnish showcases the natural beauty of the timber and keeps it protected.



White polyurethane moulding seals in the timber making it perfect for humid rooms such as bathrooms and kitchens.



# The Project Daylight promise

For over sixty years we've maintained our tradition of quality and craftsmanship. Improving productivity in the workplace, helping homeowners make the most of their living spaces and bringing light to life in buildings all over the world.

Through Project Daylight we not only promise to continue this tradition, but to build on it.

We want to break new ground in the way light is controlled, harnessed and enjoyed.

We want to help more people enjoy the benefits of natural light by making it an integral part of every room. Which in turn will help to lower costly electricity bills.

We want to provide people with products that are durable enough to continue to deliver for years to come.

[www.velux.co.uk/projectdaylight](http://www.velux.co.uk/projectdaylight)

[www.velux.ie/projectdaylight](http://www.velux.ie/projectdaylight)

Have you got your price guide?

For more information and prices on any of our products download a price guide online or order your free price guide by calling

**0870 381 0740** (UK)

**1800 409 142** (REPUBLIC OF IRELAND)





# The VELUX story

For over 60 years VELUX have manufactured the world's leading roof windows. From the first windows of 1941 VELUX have developed an extensive range envied throughout the marketplace.

It's appropriate that the name VELUX is a combination of the Latin words VEntilatio and LUX for ventilation and light.

We're a forward thinking company whose values are built upon daylight, fresh air and quality of life. Our aim is to produce innovative products that offer practical solutions to homeowners, architects and builders alike.

We provide an unequalled variety of different shapes and sizes allowing you to make positive design statements. Used imaginatively, light can become the focal point around which a property is built.

And we never compromise on quality. In the countries where VELUX was first established, it's still possible to find working windows that were installed more than 40 years ago.

VELUX Company Ltd.  
Woodside Way  
Glenrothes  
Fife, Scotland  
KY7 4ND  
Tel: 0870 264 0102  
Email: [projectdaylight@velux.co.uk](mailto:projectdaylight@velux.co.uk)  
Website: [www.velux.co.uk](http://www.velux.co.uk)

Kettering Parkway  
Wellingborough Road  
Kettering, Northants  
NN15 6XR  
Tel: 0153 651 0020  
Email: [projectdaylight@velux.co.uk](mailto:projectdaylight@velux.co.uk)  
Website: [www.velux.co.uk](http://www.velux.co.uk)

Unit 1, Willsborough Cluster  
Willsborough Industrial Estate  
Clonsaugh  
Dublin 17, Ireland  
Tel: 01 816 1616  
Email: [projectdaylight@velux.ie](mailto:projectdaylight@velux.ie)  
Website: [www.velux.ie](http://www.velux.ie)

# VELUX®



© 2007 VELUX GROUP. VELUX®, VELUX logo®, Room in the Roof®, CABRIO®, and INTEGRA® are registered trademarks